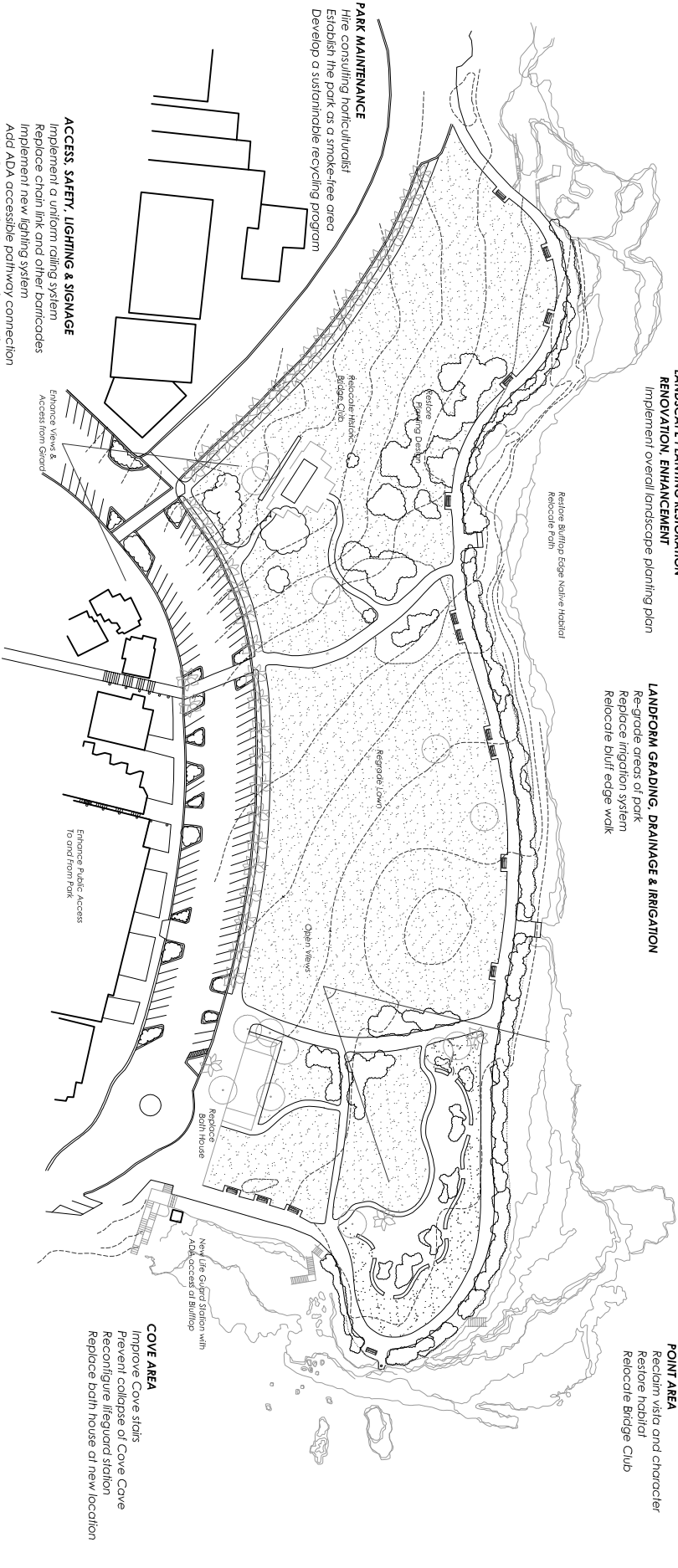


A NEW VISION FOR SCRIPPS PARK

- INTEGRATE AQUATIC & TERRESTRIAL ENVIRONMENTAL PLANNING, DESIGN & MANAGEMENT
- PRESERVE, PROTECT & ENHANCE NATURAL SYSTEMS
- ENSURE COMPATIBILITY OF FUTURE DESIGN
- PRESERVE, ENHANCE & RESTORE HISTORIC FEATURES
- ENHANCE PUBLIC ACCESS
- RESTORE & ENHANCE SPECTACULAR VIEWS
- INSTITUTE SUSTAINABLE DESIGN PRACTICES



LANDSCAPE PLANTING RESTORATION
 RENOVATION, ENHANCEMENT
 Implement overall landscape planting plan

LANDFORM GRADING, DRAINAGE & IRRIGATION
 Re-grade areas of park
 Replace irrigation system
 Relocate bluff edge walk

RESTORATION & HABITAT MANAGEMENT
 Replace ice plant with native habitat
 Control park's animal vectors

POINT AREA
 Reclaim vista and character
 Restore habitat
 Relocate Bridge Club

PARK MAINTENANCE
 Hire consulting horticulturist
 Establish the park as a smoke-free area
 Develop a sustainable recycling program

ACCESS, SAFETY, LIGHTING & SIGNAGE
 Implement a uniform railing system
 Replace chain link and other barricades
 Implement new lighting system
 Add ADA accessible pathway connection
 Add ADA compliant companion-seating
 Remove, relocate and/or remove gazebos
 Relocate/re-design signage

PARK MANAGEMENT
 Establish an Ellen Browning Scripps Memorial Park Design Review Board
 Establish an Ellen Browning Scripps Memorial Park Events & Celebrations Review Board
 Establish a San Diego Parks & Recreation Department accounting method to fund EBSM Park projects and maintenance
 Establish an Ellen Browning Scripps Memorial Park Memorials & Public Art Review Board

ADJACENT ACCESS IMPROVEMENTS/URBAN DESIGN
 Remove and improve existing pedestrian access ways
 Enhance intersection of Lower Grand and Coast Boulevard
 Reconfigure Lower Grand from Prospect Street to Coast Boulevard
 Enhance Coast Boulevard along the park north of Lower Grand
 Add peak time shuttle to transport park visitors
 Raise the southbound side of Prospect Street at Lower Grand for plaza
 Integrate urban run-off low-flow diversion into reconfiguration

COVE AREA
 Improve Cove stairs
 Prevent collapse of Cove Cove
 Reconfigure lifeguard station
 Relocate bath house at new location

Ellen Browning Scripps Memorial Park
 Nov. 18-19, 2005 Community Workshop
 Draft Plan

May 1, 2006
 Scripps Park Project
 www.ScrippsPark.com

CAMPBELL & CAMPBELL
 ARCHITECTS • LANDSCAPE ARCHITECTS • PLANNERS

1045 PINE STREET
 SAN DIEGO, CA 92101
 619.584.2500

www.scrippspark.com

